



Greystoke Gardens, London

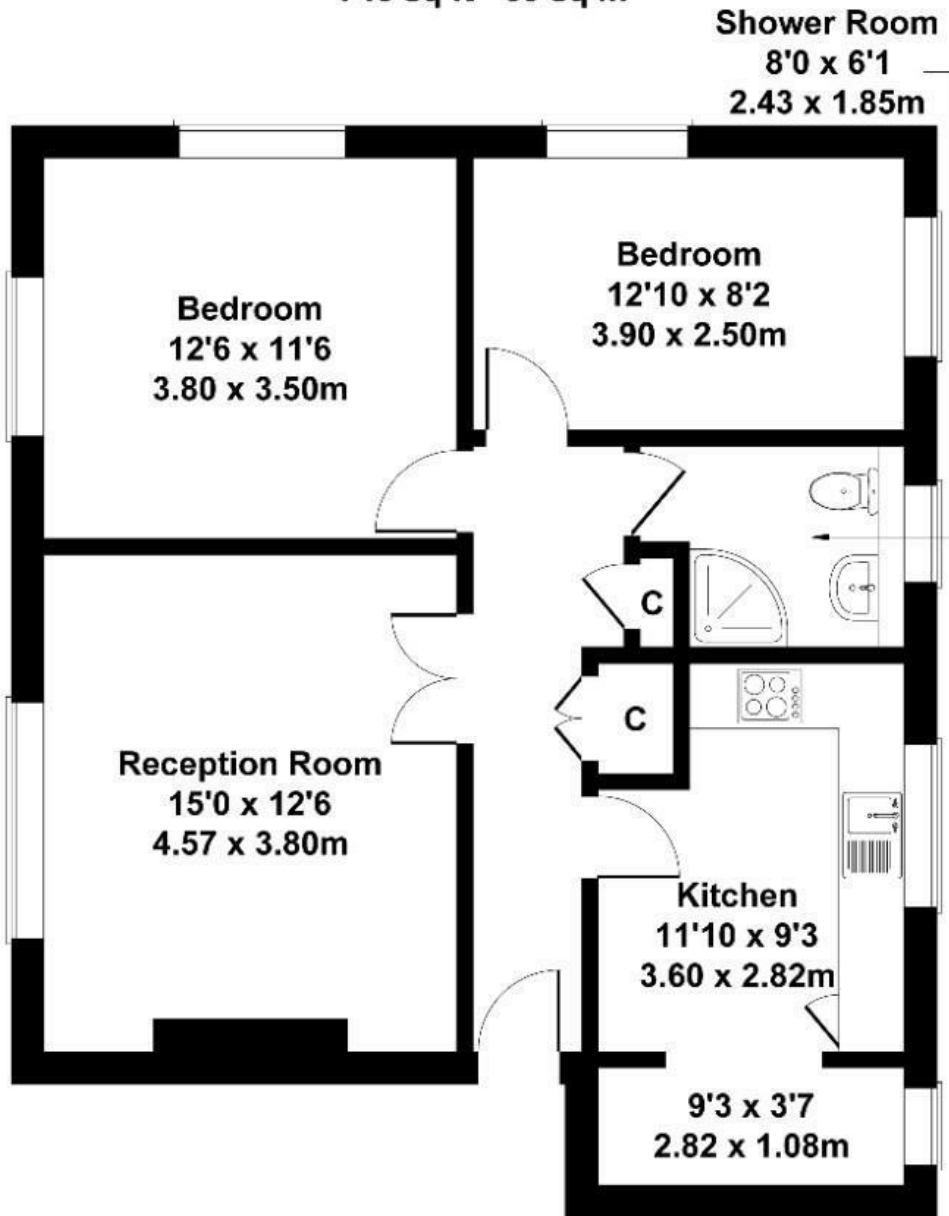
LONG LET. A stylish recently refurbished two double bedroom purpose built apartment with a large kitchen and reception rooms close to Hanger Lane.

- TWO DOUBLE BEDROOMS
- CLOSE TO STATIONS AND LOCAL TRANSPORT
- GREAT FOR MOTORISTS
- RECENTLY RE-PAINTED
- LARGE LIVING AREA
- CLOSE TO AMENITIES

£1,999

Greystoke Gardens

Approximate Gross Internal Area
743 sq ft - 69 sq m



SECOND FLOOR

Not to Scale. Produced by The Plan Portal 2025
For Illustrative Purposes Only.

Energy Efficiency Rating		Current	Potential
Very energy efficient - lower running costs			
(92 plus) A			
(81-91) B			
(69-80) C		78	
(55-68) D			
(39-54) E			
(21-38) F			
(1-20) G			
Not energy efficient - higher running costs			
England & Wales		EU Directive 2002/91/EC	